



Available with:
PSAC - Proportional Single Axis Control
or MAC - Multi Axis Control

Winlet 785

Superior lifting capacity and reach

Winlet 785 glazing robot has an impressive reach while the unique double extension of the lifting arm makes the machine extremely compact during transportation.

The glazing robot has a load capacity of 785 kg and has 6 hydraulic functions with both lateral/vertical movement and rotation being hydraulically actuated.

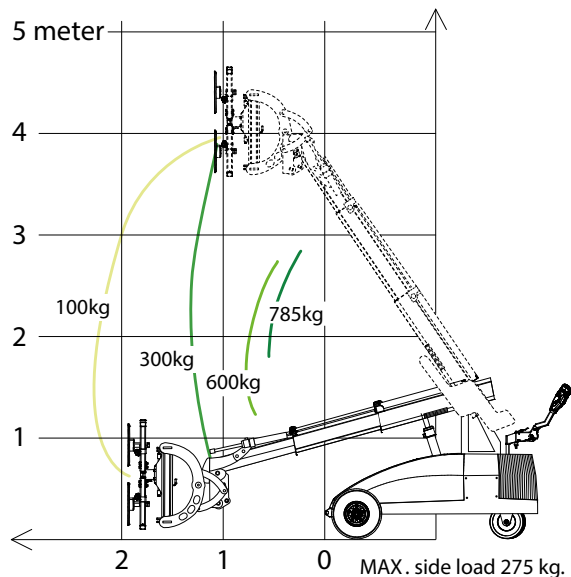
Maximum safety

Winlet 785 is equipped with a unique safety monitoring system which means that the position of the machines front is always known and is communicated to the Winlet controller, thereby avoiding dangerous situations.

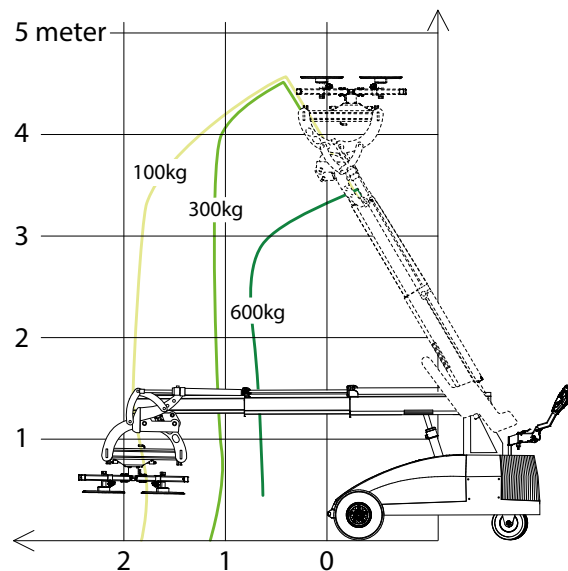


Winlet 785

REACH DIAGRAM

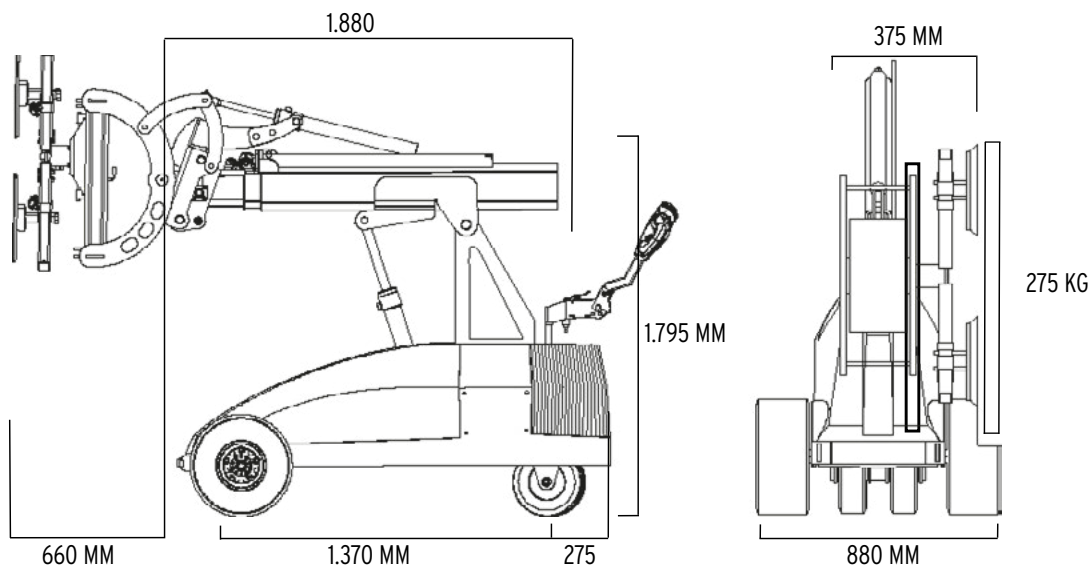


PICKUP AND PLACE DIAGRAM



SPECIFICATIONS*

EXTERNAL LENGTH	1.880 MM	MAX LIFTING HEIGHT - to center of lifting yoke	3.970 MM
EXTERNAL WIDTH	880 MM	HYDRAULIC SIDE SHIFT	75 MM
MAX LIFTING CAPACITY	785 KG	HYDRAULIC FINE LIFT ON ARM	200 MM
MAX LOAD AT MAX EXTENSION	100 KG	TILT FUNCTION OF THE FRONT - Horizontal arm	BACK: 42° FORTH: 79°
MAX SIDE MOUNTED LOAD	275 KG	HYDRAULIC ROTATION	360 °
TOTAL WEIGHT excl. counterweights	1.142 KG	SUCTION CUPS	4 x ø410 MM
TOTAL WEIGHT incl. counterweights	1.422 KG	BATTERIES	2 X 150 AH
EXTENSION MIN/MAX - Front bumper to suction cup	660 MM / 2.500 MM	MAX SPEED	0-5 KPH



* The dimensions are indicative and may vary +/- 10mm. The photographs and/or drawings in this document are for illustrative purposes only.

Winlet - Superior usability



User friendly operating panels of your choice

Choose between two different types of operating panels for your Winlet:

1. **MAC (Multi Axis Control)**, which allows controlling of more hydraulic functions at a time. The operator can adjust the speed at the levels: 10 % - 50 % - 100 %.

2. **PSAC (Proportional Single Axis Control)**, the traditional Winlet controls, where one function is operated step-less.

If you need to control the Winlet from a distance, we recommend our radio remote control.

All operating panels are waterproof, according to the IP65 regulations.

Safety first!

All Winlets are equipped with a state-of-the-art overload monitoring system, which continuously measures the point loading on the steering wheels. If point loading is getting too low the system will automatically cut off the hydraulic functions and only allow hydraulic cylinders to bring the load closer to the machine.



Winlet accessories



Make the most of your Winlet

Winlet comes with a wide range of accessories. Here is a few of our most popular items:

- **LIFTING FORK & LIFTING HOOK**
 - for lifting of pallets or with straps
- **LIFTING SLING**
 - for lifting the Winlet by crane
- **SHUT-OFF VALVES**
 - on suction cups
- **QUICK CONNECTORS**
 - on suction cups or main supply
- **EXTENSION OF THE BEAMS**
 - customized cross - and main beams
- **RADIO REMOTE CONTROL**
- **QUICK SHIFT FOR TELEHANDLER**

Please consult our experts to find the right accessories for your project.



Lifts all airtight material

All Winlet glazing robots can easily be adapted to lift a wide range of materials by changing the suction cups. This makes Winlet ideal when handling:

- | | |
|---------------|---------------|
| GRANITE | WOODEN PLATES |
| CONCRETE | TILES |
| PLASTERBOARDS | FIRE DOORS |
| STEEL PLATES | |

