

SPT 499

with hydraulic fly jib

New Height
24.3m



HENAN SPT MACHINERY
EQUIPMENT CO., LTD.

Mini Crawler Crane (Spider Crane)

International Brand, EU standard
SPT Safe Spider Crane, protecting construction, protecting people

SPT499 with hydraulic fly jib



Max lifting height 24.3 m

Capacity 5.0t×3.0m

Weight 6550 kg

Working radius 16.5 m

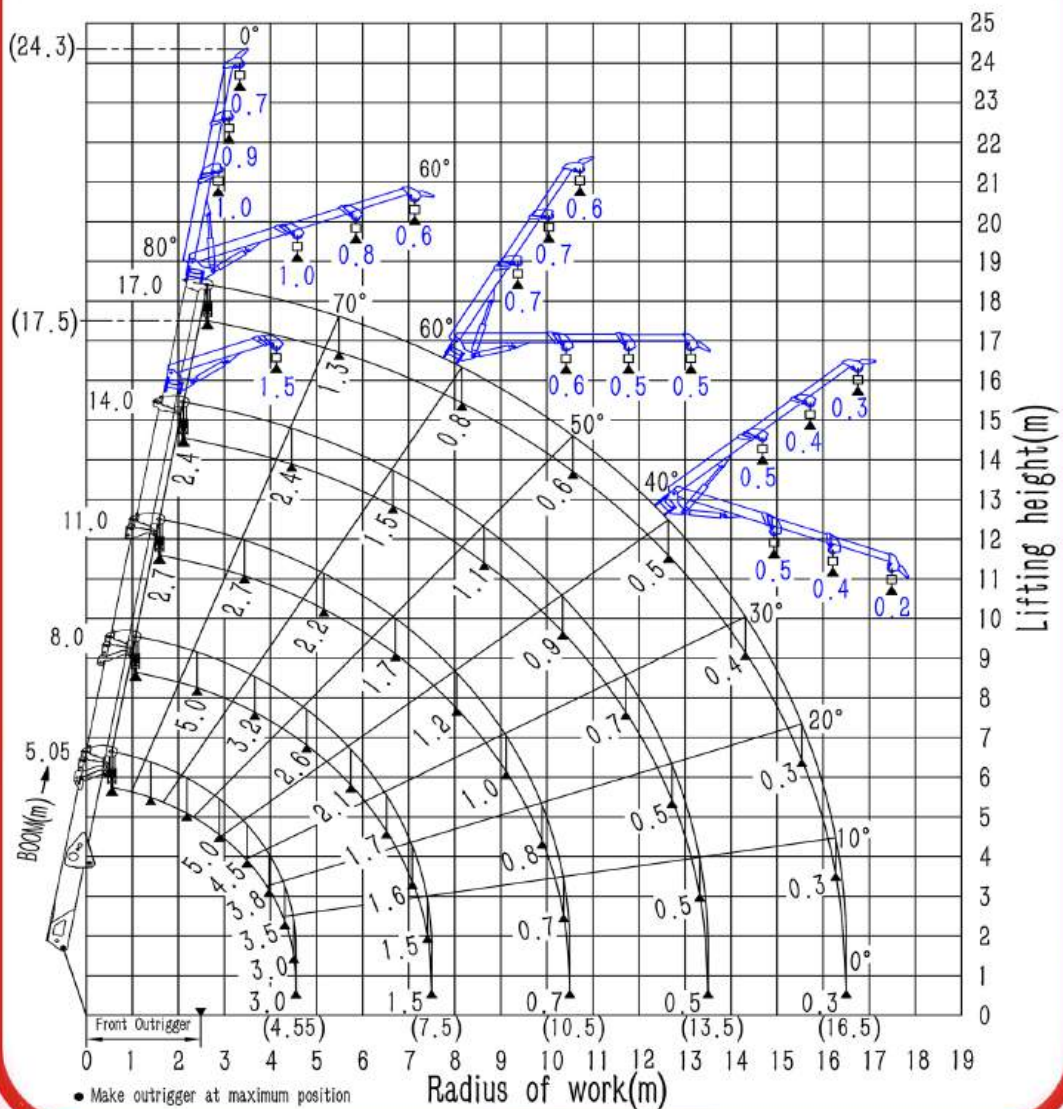
SPT499 with hydraulic fly jib



Working Range Diagram With Fly Jib

SPT499 Lifting Chart with Fly Jib

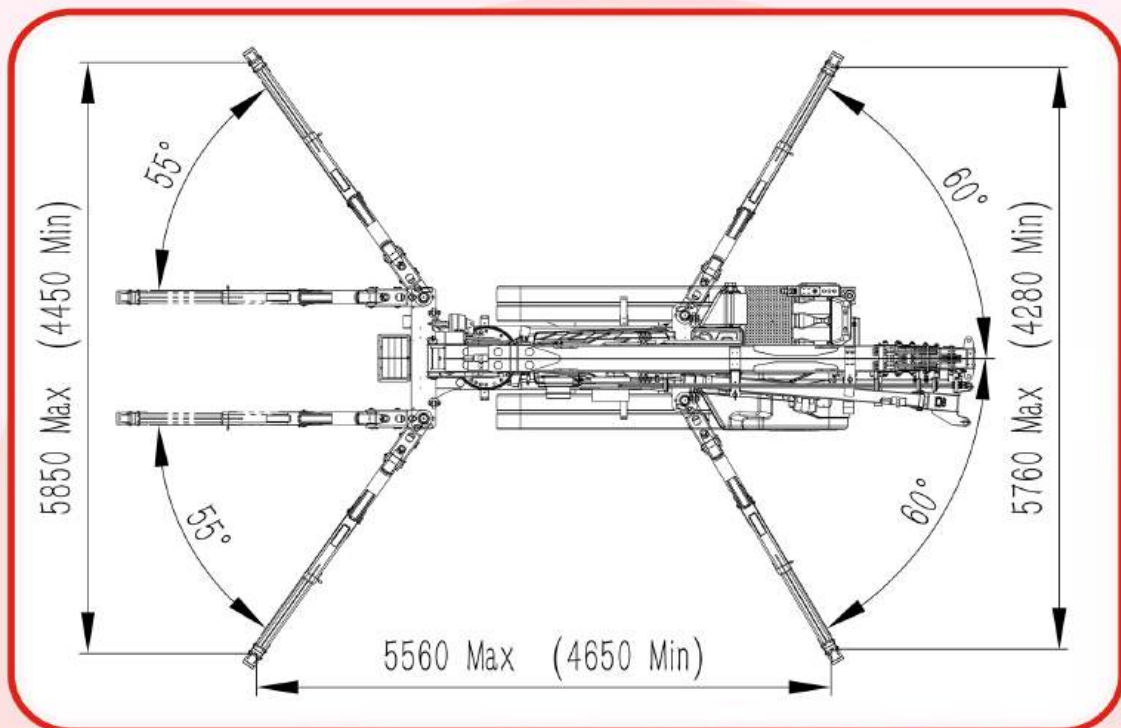
Weight: T



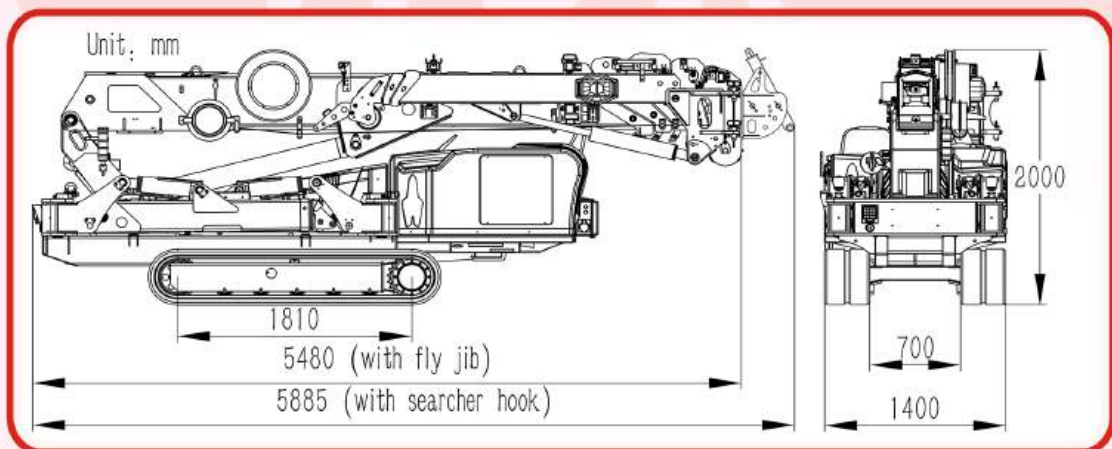
SPT499 with hydraulic fly jib



Outrigger Footprints



Dimensions



SPT499 with hydraulic fly jib



Specifications

Model	SPT499	
Capacity	5.0t × 3.0m	
Working radius	16.50m × 0.30t	
Ground lifting height	17.5m×1.3t / 24.3×0.7t (with fly jib)	
Underground lifting height	20m-4 fall 40m-2 fall 80m-1 fall	
Winch device	Hook speed	0-14m/min (4 fall)
	Rope type	Φ 10mm × 90m
Telescopic system	Boom form	5 section boom, hexagonal box construction
	Boom length/Time	5.05m-17.00m/100sec
Up and downs	Boom angle/Time	0-80°/80sec (adjustable)
Slew system	Slew angle/Speed	0-360° (continuous)/120sec
Outrigger	Outrigger active form	Manual+Hydraulic
	Maximum extended dimensions (mm)	5560(Length)X5850(Front)X5760(Back)
Traction system	Walking way	Hydraulic motor drive, 2 speed
	Walking speed	0-2.0km/ h
	Grade ability	20° (36%)
	Ground length × width	1810mm × 350 mm
	Ground pressure	49kpa(0.50 kg/cm ²)
Electric motor	Voltage	AC 380V(three phase)
	Power/Speed	7.5kw/1440 min-1
	Sound level	Rated speed ≤ 80 dB(A) (1m)
Diesel engine	Model	D1703(Kubota)
	Type/Displacement	3 cylinder water cooled/1.6 L
	Rated output	18.5kw/2200 min-1
	Starting method	Electric
	Operating temperature	-5° C-40° C
	Fuel/Volume	Diesel/40L
	Battery capacity	12v 60AH
	Specific fuel consumption	254g/kW-h
	Sound Level	Rated speed ≤ 91dB(A) (1m)
Operate system	Applied regulation/Altitude	EPA-Tier4, EC stage V/1200m
	Type of operation	Wireless remote control and Dual axis joystick controller
Dimension	Operating characteristic	Proportional control and composite action
	Length × Width × Height	5480mm × 1400mm × 2000mm
Weight	Crane + Hydraulic fly jib	6200kg+350kg
Standard configuration	Diesel engine and motor (Dual power), Manual and wireless proportional remote (Dual operation mode), Intelligent display screen, Moment limiter, Over hoist alarm and automatic stop device, Three-winding alarm and automatic stop device, Automatic hook stow, Outrigger position detector device, Outrigger off ground alarm and automatic stop device, Slings rope detachment protector, EMO switch, Three color lamp, Remote control lamp, Voice prompt, Walking/Outrigger/Boom three-mode interlock system, Data records, Black rubber track, Searcher hook, Single fall hook, Stainless steel toolbox	
Optional configuration	Glass suction, White rubber track, hydraulic fly jib, Single-man basket, Outrigger pads	

SPT499 with hydraulic fly jib



|| Total rated load Outriggers at Maximum position--Main boom

Working radius m	Total rated load (t)				
	5.05 boom	8.00boom	11.00boom	14.00boom	17.00boom
2.50	5.00	5.00	3.20	2.40	—
3.00	5.00	4.00	3.20	2.40	1.30
3.50	4.50	3.30	3.20	2.40	1.30
4.00	3.80	3.00	3.00	2.40	1.30
4.55	3.00	2.70	2.70	2.40	1.30
5.00		2.50	2.20	2.20	1.30
6.00		2.00	1.90	1.60	1.00
7.00		1.60	1.60	1.40	0.90
7.50		1.50	1.40	1.30	0.80
8.00			1.20	1.20	0.75
9.00			1.00	1.10	0.70
10.00			0.75	0.95	0.65
10.50			0.70	0.90	0.65
11.00				0.70	0.60
12.00				0.65	0.55
13.00				0.50	0.50
13.50				0.50	0.45
14.00					0.40
15.00					0.35
16.00					0.35
16.50					0.30