

# SPT1009

with hydraulic fly jib

**New Height  
28.2m**



**HENAN SPT MACHINERY  
EQUIPMENT CO., LTD.**

**Mini Crawler Crane (Spider Crane)**

**International Brand, EU standard  
SPT Safe Spider Crane, protecting construction, protecting people**

# SPT1009 with hydraulic fly jib



Working radius 19 m

Max lifting height 28.2 m

Capacity 10.0t×2.5m

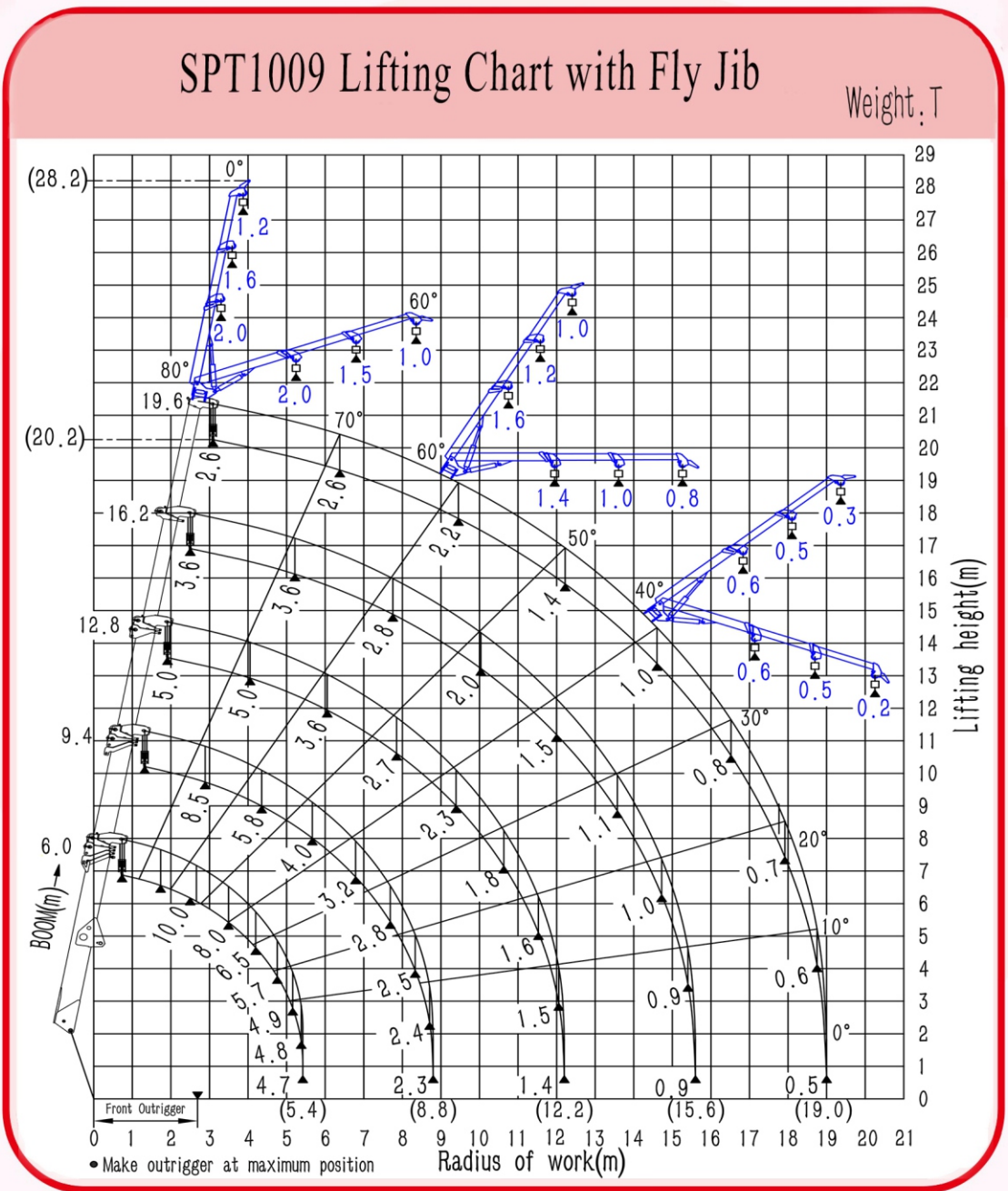
Weight 12220 kg



# SPT1009 with hydraulic fly jib



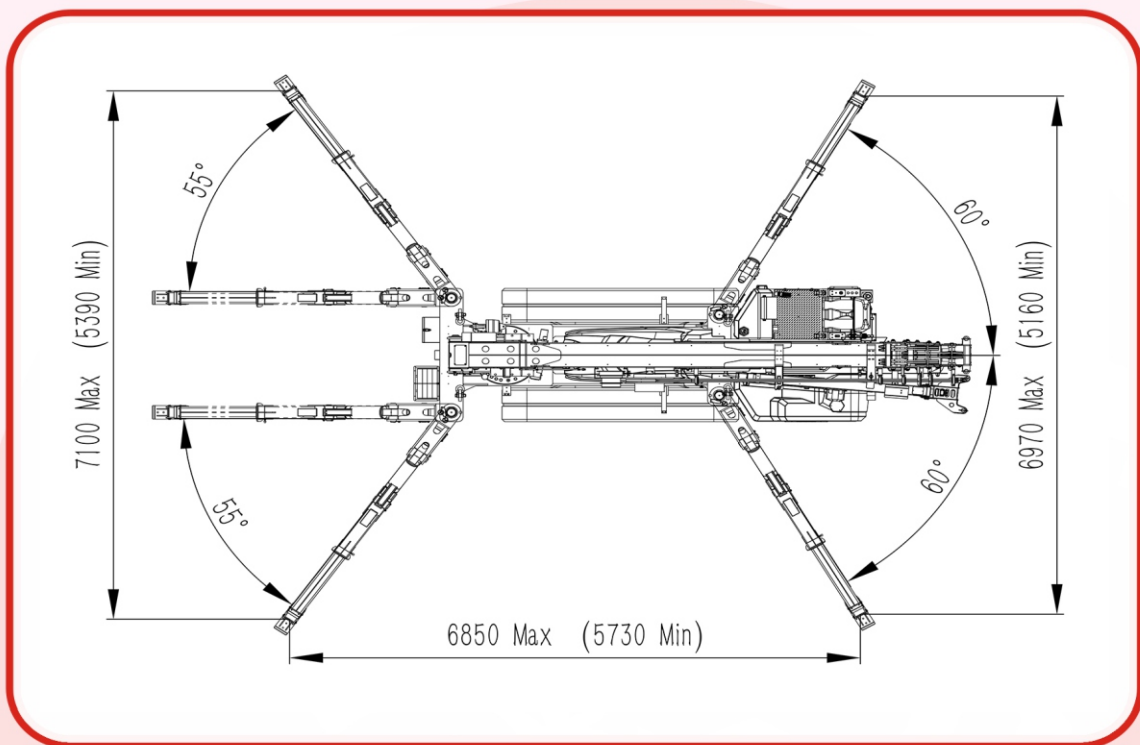
## Working Range Diagram With Fly Jib



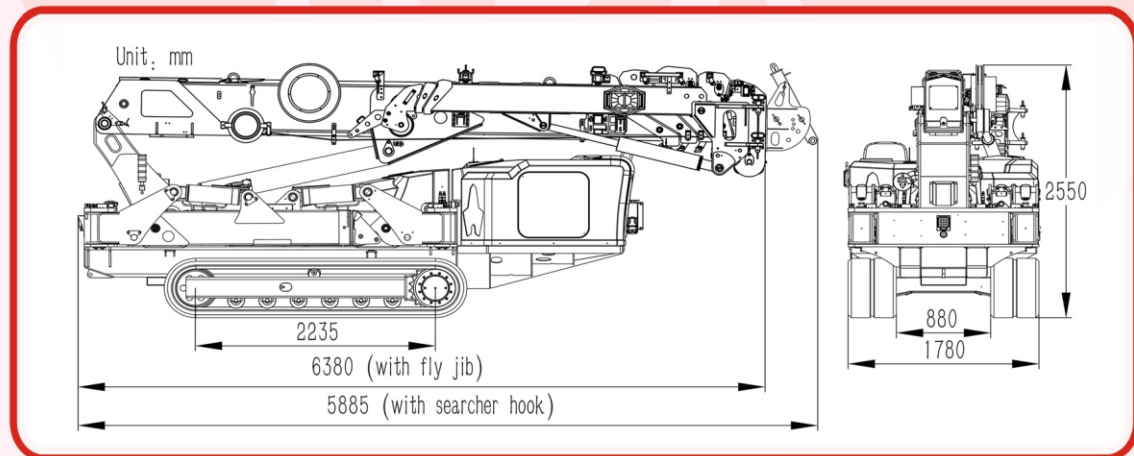
# SPT1009 with hydraulic fly jib



## Outrigger Footprints



## Dimensions



# SPT1009 with hydraulic fly jib



## Specifications

Model	SPT1009	
Capacity	10.0t × 2.5m	
Working radius	19m × 0.5t	
Ground lifting height	20.2m × 3.0t / 28.2 × 1.2t (with fly jib)	
Underground lifting height	23m-6 fall 34.5 m-4 fall 69m-2 fall 138m-1 fall	
Winch device	Hook speed	0-12m/min (6 fall) 0-18m/min (4 fall)
	Rope type	Φ10mm × 150m
Telescopic system	Boom form	5 section boom, hexagonal box construction
	Boom length/Time	6.0m-19.6m/100sec (adjustable)
Up and downs	Boom angle/Time	0-80° /80 sec
Slew system	Slew angle/Speed	0-360° (continuous) /120 sec
Outrigger	Outrigger active form	Manual + Hydraulic
	Maximum extended dimensions (mm)	6850 (Length) X7100 (Front) X6970 (Back)
Traction system	Walking way	Hydraulic motor drive, 2 speed
	Walking speed	0-2.0 km/ h
	Grade ability	23° (42%)
	Ground length × width	2235mm × 400 mm
	Ground pressure	67kpa ( 0.68 kgf/cm <sup>2</sup> )
Electric motor	Voltage	AC 380V(three phase )
	Power/Speed	15kw/1440 min-1
	Sound level	Rated speed ≤82dB(A) ( 1m )
Diesel engine	Model	4TNV88 (YANMAR)
	Type/Displacement	4 Cylinder water cooled/2.19L
	Rated output	29.1kw/2400 min-1
	Starting method	Electric
	Operating temperature	-5° C~40° C
	Fuel/Volume	Diesel/60L
	Battery capacity	12v 190AH
	Specific fuel consumption	239g/kW-h
	Sound Level	Rated speed ≤93dB(A) (1m)
Applied regulation/Altitude	EPA-Tier4, EC stage V/1200m	
Operate system	Type of operation	Wireless remote control and Dual axis joystick controller
	Operating characteristic	Proportional control and composite action
Dimension	Length × Width × Height	6380mm × 1780mm × 2480mm
Weight	Crane + Hydraulic fly jib	11800kg+420kg
Standard equipment	Diesel engine and motor (Dual power), Manual and wireless proportional remote (Dual operation mode) , Intelligent display screen, Moment limiter, Over hoist alarm and automatic stop device, Three-winding alarm and automatic stop device, Automatic hook stow, Outrigger position detector device, Outrigger off ground alarm and automatic stop device, Slings rope detachment protector, EMO switch, Three color lamp, Remote control lamp, Voice prompt, Walking/Outrigger/Boom three-mode interlock system, Data records, Black rubber track, Searcher hook, Single fall hook,Stainless steel toolbox,	
Optional equipment	Glass suction cup 、 White rubber track 、 Outrigger Pads、 Man basket	

# SPT1009 with hydraulic fly jib



## ■ Total rated load Outriggers at Maximum position--Main boom

Working radius (m)	Total rated load (t)				
	6.00 boom	9.40boom	12.80boom	16.20boom	19.60boom
2.50	10.00	8.50	5.50	4.00	—
3.00	9.20	8.50	5.50	4.00	3.00
3.50	8.00	7.50	5.50	4.00	3.00
4.00	6.80	6.40	5.50	4.00	3.00
4.50	6.00	5.60	5.20	4.00	3.00
5.00	5.20	4.80	4.80	4.00	3.00
5.40	4.70	4.60	4.50	3.80	3.00
6.00		3.80	3.60	3.40	3.00
7.00		3.00	3.00	3.00	2.80
8.00		2.60	2.60	2.60	2.60
8.80		2.30	2.30	2.30	2.30
9.50			2.20	2.20	2.20
10.00			2.00	2.00	2.00
11.00			1.70	1.70	1.70
12.20			1.40	1.40	1.40
13.00				1.20	1.20
14.00				1.10	1.10
15.00				1.00	1.00
15.60				0.85	0.85
16.00					0.80
17.00					0.75
18.00					0.65
19.00					0.50